

THE
WILLOW



Welcome cocktail

Glass of prosecco or mocktail

Starters to share

Red tuna tartare with
strawberries & tomato hearts

GF/DF/GrF/P/LC/PR/LS/HF Allergens: Fish

Maldon's oysters with pink
grapefruit crush & red amaranth

GF/DF/GrF/P/PR/LS Allergens: Shellfish

Luscious red Valentine salad

GF/DF/GrF/V/Ve/P Allergens: Sulphites

Steamed mangetout &
tender stems with sesame

GF/DF/GrF/V/Ve/LC/PR/LS Allergens: Sesame

Coconut prawn curry

GF/DF/GrF/P/LC/PR/LS Allergens: Shellfish

Mains

Spiced grilled fresh Scottish salmon
with blood orange salad

GF/DF/GrF/P/LC/PR/LS/HF Allergens: Fish, mustard

Aberdeenshire 30 days dry age rib eye
with wild mushrooms & sweet potato chips

GF/DF/GrF/P/LC/PR/LS

Seaweed tagliatelle provencal style

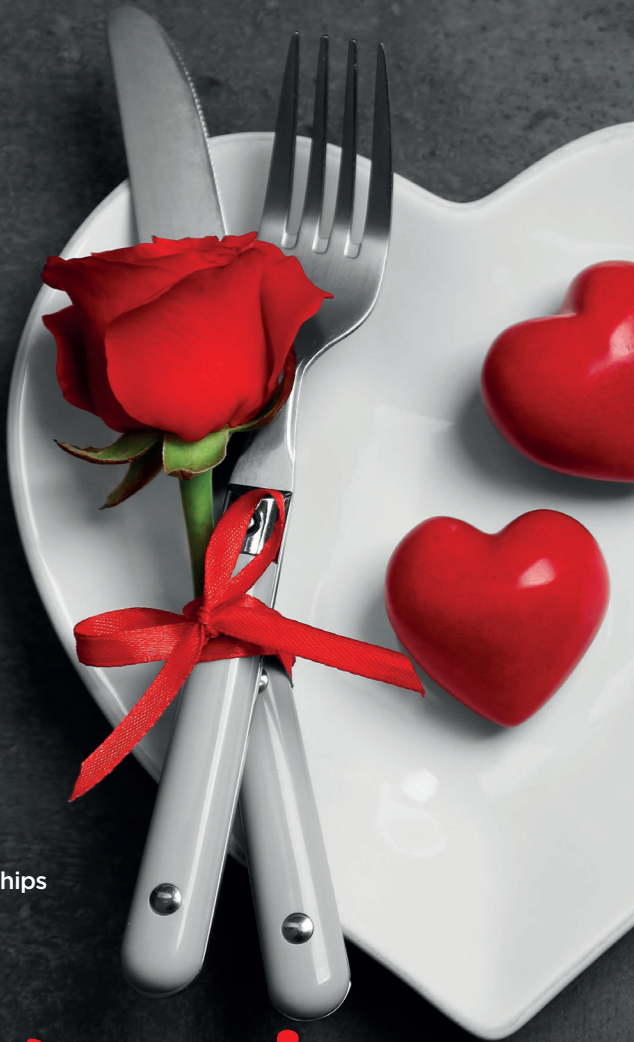
GF/DF/GrF/V/Ve/P/LS Allergens: Shellfish, walnuts

Dessert

Tiramisu or raspberry
cheesecake

GF/DF/GrF/V/Ve/P

Allergens: Cashew, brazil nuts



Valentines
at
the **Willow**



**BOOK NOW! Call 020 3034 2424 to reserve
your romantic table or email info@yourwillow.co.uk**

The Willow Real Food Restaurant & Bar 16 The Triangle, Kingston KT1 3RT

Wednesday 14th February from 6pm. 2 course option £30 per person. Deposit required.